

Environmental Protection & Spill Response Trailers

SRT10000

7'x14' Spill Response Trailer (Standard) 7000lbs

**Other sizes optional, subject to availability*

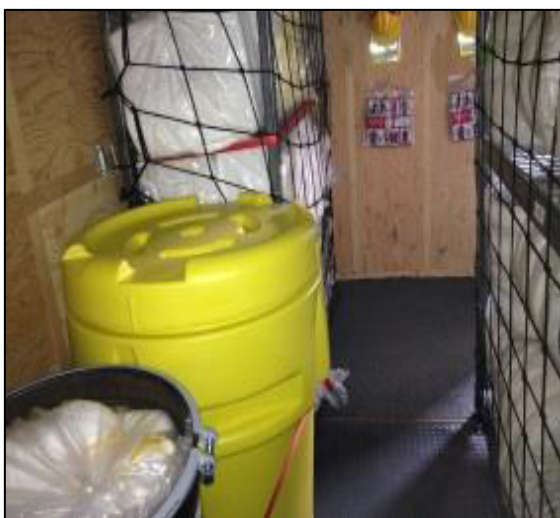
- 💧 EZ-lube Dual axle, Electric brakes
- 💧 Premium Factory Eco-Paint
- 💧 HD Industrial Steel Shelving
- 💧 Rear Ramp Style Door style (opt)
- 💧 Side door Interior light, pad locks
- 💧 Shelf tie downs, drum straps, labeling
- 💧 HD Equipment Totes for loose Inventory



The SRT1000 contains sufficient material to cope with spills of up to 10,000 liters. It is well equipped for areas where staff is not necessarily equipped to protect the environment. Mines, pipeline construction sites, truck yards, refueling depots, supply stations, response centres. It is ideal for high-risk areas near lakes and rivers, foreshore, fish farms.

- 💧 Absorbent Materials for
 - Hydrocarbons
 - Water-based liquids
 - Hazmat Liquids such as acids & alkalis
- 💧 Various Sealant Materials
- 💧 Various granular absorbents
- 💧 Emergency Spare Wheel
- 💧 Trailer Immobilizer Wheel Lock
- 💧 Customize with our bundles





Need something not listed? Just ask!

Custom lettering with your logo optional!

(Not all items shown in photos are included in the basic SRT10000 model. Customize with our product bundles)